

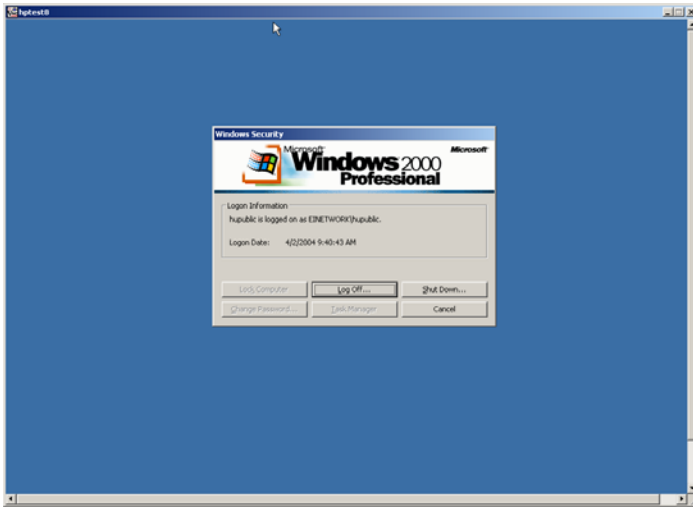
CybraryN Enhancements and Software Fixes 2004 1st Quarter Upgrade

CybraryN (Public PCs)

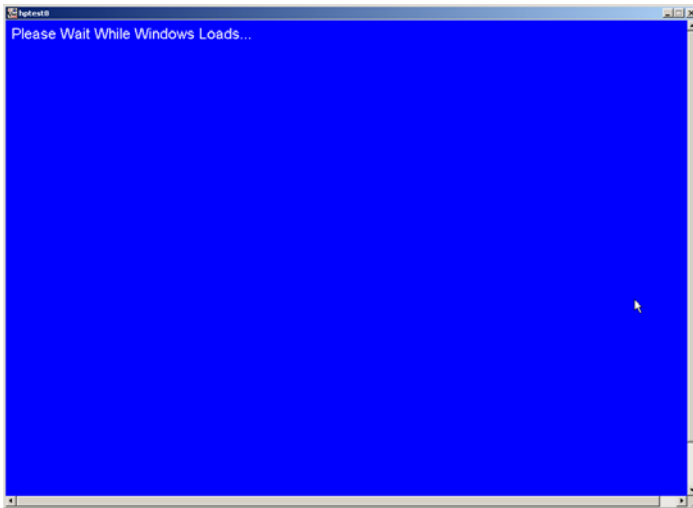
Version 2004.1.22

Enhancements:

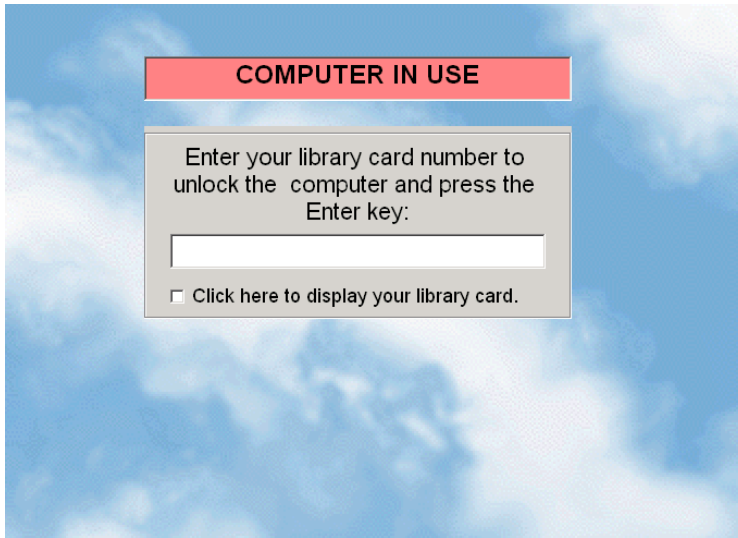
- Task Manager is locked down & will only allow a **Logoff** or a **Shutdown**. Users can no longer end specific tasks and get onto the PC underneath CybraryN software.



- A blank blue screen will display upon startup while CybraryN software loads. Users will no longer see or be able to select shortcut icons on desktop while CybraryN is starting up. This will alleviate the issue of patrons getting around the software.



- More detailed instructions appear when a patron pauses their CybraryN Session. They are also able to view their barcode as they enter it.



Software Fixes:

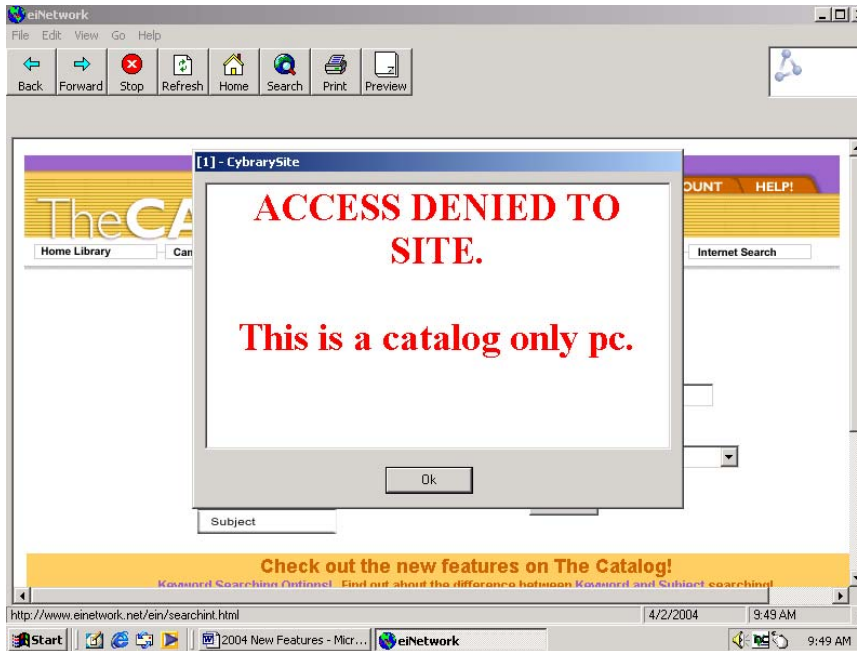
- Login button is disabled before the start time listed in the Usage Tab on CybraryN Server under “Hours of Operation”. Double clicking on the large clock and entering the override password will allow you to login before hours. The floating **Logout|Pause** box will display, but the clock will not. If CybraryPrint is in use at a site, printing will still be through CybraryPrint during off hours.
- Corrected issue where the floating clock displays incorrect time when autosnooze extends past the Hours of Operation.

CybrarySite

Version 2004.1.6

Enhancements:

- Ability to customize the **Access Denied to URL** message that appears when users attempt to go to denied web addresses. Contact eiNetwork to request.



Software Fixes:

None

CybraryPrint (Release Station)

Version 2004.1.0

Enhancements:

- None

Software Fixes:

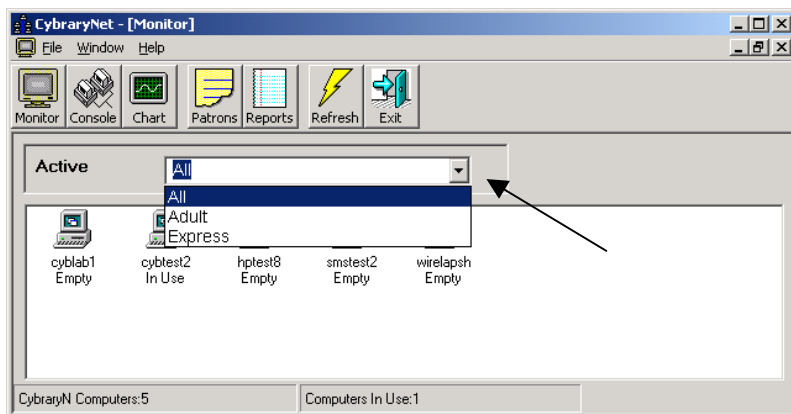
- None

CybraryNet

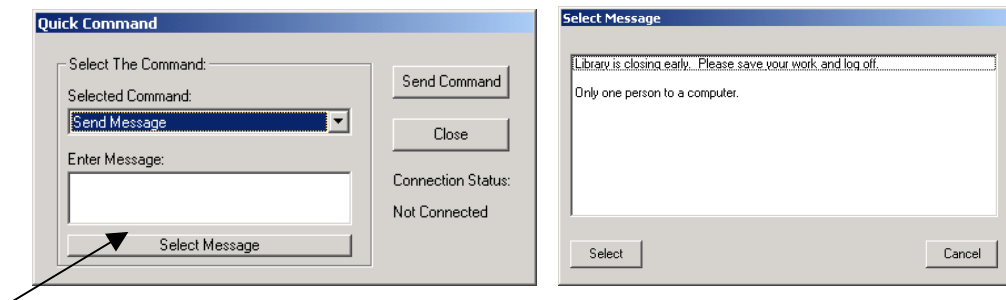
Version 2004.1.3

Enhancements:

- The PC group you are viewing will display in the **Active** box. You can change the group to display by using the down arrow and selecting the group you wish to view.



- The Monitor and Chart automatically refresh every 10-20 seconds to display updated information.
- A list of predefined messages is requestable by each library. A list of library defined messages can be added to a file that will display when you select the **Select Message** button. Contact eiNetwork to request.



Software Fixes:

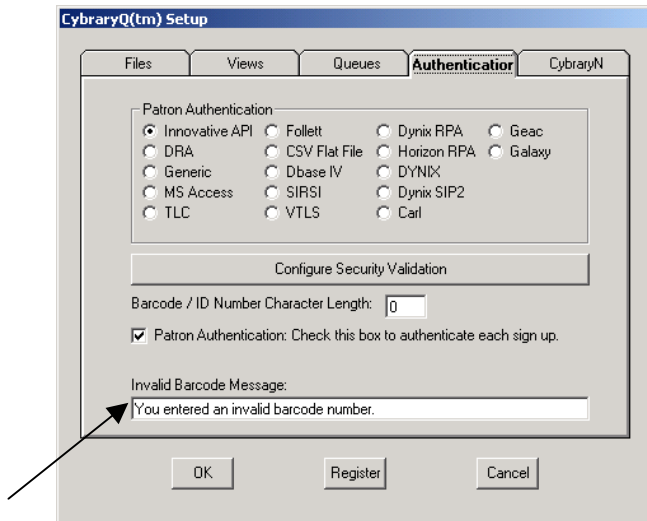
- Software bug has been corrected where incorrect PC name appear in the Monitor display vs. PC info box (yellow dialog box).
- Chart correctly displays the amount of time a user has remaining after their time has been automatically extended or "snoozed".
- Libraries can now run their own reports, all software bugs have been corrected.

CybraryQ

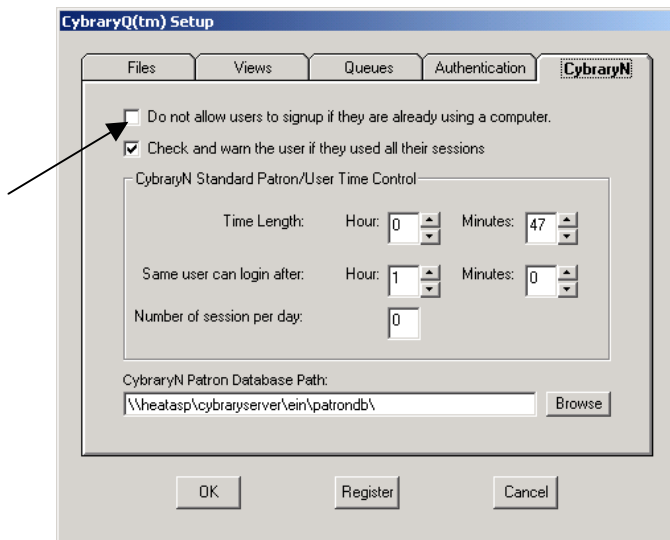
Version 2004.1.1

Enhancements:

- **Invalid Barcode message** can be customized by library.
File → Setup → Authentication Tab



- Option to not allow user to sign up at Queue station if they are logged onto a computer.
File → Setup → CybraryN Tab



Software Fixes:

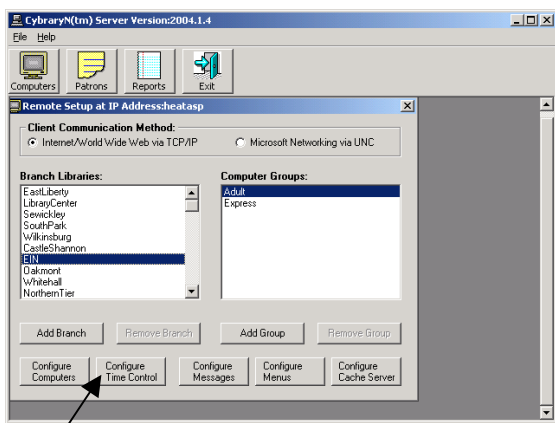
- None

CybraryN Server

Version 2004.3.3

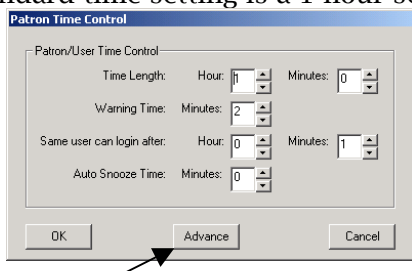
Enhancements:

- New **Configure Time Control** button allows you to access Patron Time Control and Advance Time Control screens directly. Time Controls are still available using the **Configure Computers** button as well.

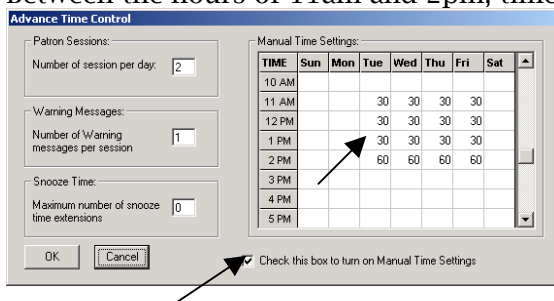


- Manual time settings are available from **Advance Time Control** screen. This feature will allow you to use session lengths different than default group settings during defined periods of the day.
- **Example:** The following is an example of a shortened time session over the lunch hour.

- Standard time setting is a 1-hour session.



- Between the hours of 11am and 2pm, time sessions are 30 minutes.



- The standard setting should be entered in minutes when you wish to resume to your standard time setting.
- Manual Time Setting box must be checked to activate this feature.

Software Fixes:

- None